

BRANSON 7H011488

HOUSA000069701705

SANDY-VALLEY BRANSON-ET TR TP TY TV TL TD HH5C HH1T HH2T HH3T HH4T HH6T

OBSERVER X RAMOS X SHOTTLE

Born On: November 15, 2010

Beta-casein: A2A2 Kappa-casein: AA EFI: 8.0% aAa: 534126

Sire: DE-SU OBSERVER-ET

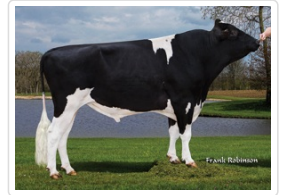
Dam: SANDY-VALLEY R BRYLLIANT-ET VG-86

2-00 2X 339D 13063 kgM 3.8% 501 kgF 3.1% 409 kgP

MGS: RAMOS

Daughter Average:

12442 kgM 480 kgF 3.90%F 384 kgP 3.10%P



Maier Farms Branson 8071



Dexter Dairy Branson 1986-Grade



S-S-I Branson Dream 6515

INDEXES

TPI	2186
NM\$	428
CM\$	440
Feed Efficiency (%)	57
DWP\$	465
WT\$	81
CW\$	-37

PRODUCTION

PTA Milk (lbs)	348
PTA Protein (lbs)	14
PTA Protein (%)	0.01
PTA Fat (lbs)	23
PTA Fat (%)	0.04
Production Reliability %	99
Dtrs/Herds	3604/616

TYPE

PTA Type	1.89
Udder Composite	2.50
Feet & Leg Composite	0.57
Body Weight Composite	-0.55
Dairy Composite	0.70
Type Reliability %	97
Dtrs/Herds	313/132

WELLNESS TRAITS

CDCB ZOETIS

Mastitis/Rel.%	1.6/91	100/85
Lameness/Rel.%		97/80
Retained Placenta/Rel.%	0.4/79	114/86
Ketosis/Rel.%	0.5/72	103/81
Metritis/Rel.%	1.2/79	109/84
Displaced Abomasum/Rel.%	-0.1/76	99/77
Hypocalcemia/Milk	0.1/62	
Fever/Rel. %		
Calf Respiratory/Rel. %		92/92
Calf Scours/Rel. %		103/92
Calf Livability/Rel. %		97/94

DAUGHTER FERTILITY

Fertility Index	0.9
DPR/Rel.%	0.5/97
HCR/Rel.%	1.8/95
CCR/Rel.%	1.3/97

SIRE FERTILITY

SCR/Rel %

MANAGEMENT TRAITS

SCE/Rel %	7.0/99
DCE/Rel.%	4.2/97
Gestation Length/Rel.%	-3.2/99
Early First Calving/Rel.%	2.7/94
SSB/Rel.%	6.4/98
DSB/Rel.%	5.4/97
Productive Life/Rel.%	4.2/97
Livability/Rel.%	2.8/88
SCS/Rel.%	2.74/99
Milking Speed/Rel.%	105/86

Stature	Short		0.65	Tall
Strength	Frail		-0.35	Strong
Body Depth	Shallow		-0.22	Deep
Dairy Form	Tight Ribbed		1.10	Open Ribbed
Rump Width	Narrow		0.54	Wide
Rump Angle	High Pins		0.92	Sloped
Rear Leg (side view)	Posty		0.51	Sickled
Rear Leg (rear view)	Hock-in		0.25	Straight
Foot Angle	Low Angle		0.18	Steep Angle
Feet & Leg Score	Low		0.81	High
Fore Udder	Loose		3.13	Strong
Rear Udder Height	Low		3.07	High
Rear Udder Width	Narrow		2.82	Wide
Udder Cleft	Weak		0.91	Strong
Udder Depth	Deep		2.33	Shallow
Front Teat Placement	Wide		1.29	Close
Rear Teat Placement	Wide		0.85	Close
Teat Length	Short		-1.12	Long